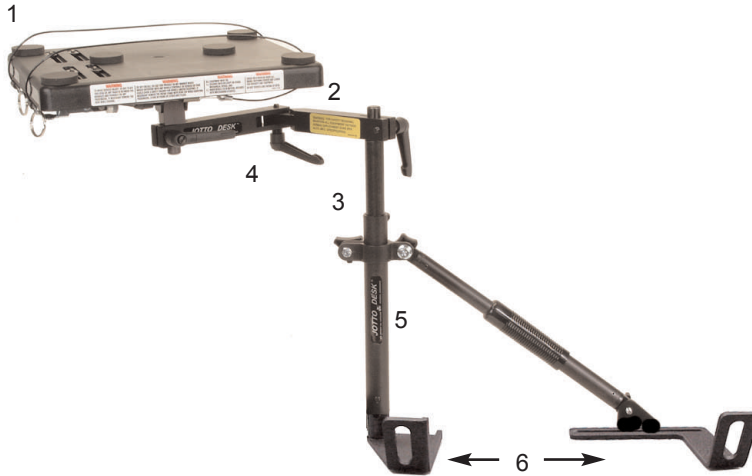


# JOTTO DESK®

The Mobile Office Desk®

## Quick Info...

1992-2001 Ford Explorer  
 Height varies from 16.5"-22"  
 (with optional 14" rod; height varies 20" to 24.5")



### 1 - ABS Cable-Dock® Desktop

Rotates 360° with ergonomic platform tilt. Two (2) nylon coated steel cables secure notebook computer to desk. "One Hand" operation for removing and securing computer. Six (6) foam pads lifts the computer off the desktop providing shock absorption and air flow under computer.

### 2 - Articulated Swing Arm

Rotates 360° around stand and extends 13 3/8". Ratchet Handles secure swing arm in position at elbow and stand.

### 3 - Telescoping Rod

Extends desktop height. Travels inside of stand.

### 4 - Ratchet Handle

Secures swing arm positioning and allows for 360° swing arm rotation.

### 5 - Telescoping RV Brace

Ties stand to second base providing additional support. Allows for width adjustment of bases.

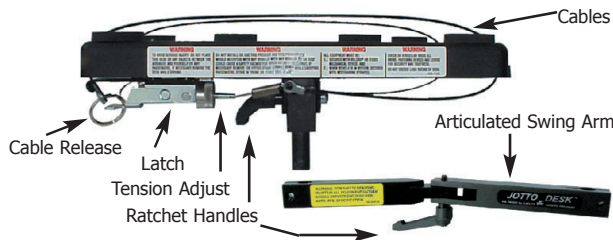
### 6 - Stand

1" x 10" steel stand attaches to base and houses telescoping Rod.

### 7 - Two Piece Base

Seven (7) gauge two-piece design increases overall sturdiness and frees up leg room.

## Cable Dock® Securing System



## Model 5325ACD Summary

Model 5325ACD is an ergonomic, multi-adjustable swing arm desk used as a platform for mobile professionals to secure and comfortably use a notebook computer in a vehicle. The Cable-Dock® securing system utilizes two (2) nylon coated steel cables that wrap up and over the whole computer for a firm and positive grip. The "Original" articulated swing arm enables you to pull the desktop over for comfortable operation, reducing back strain.

## Major Component Dimensions & Specs

<b>ABS Cable Dock® Desktop:</b>	10" x 12" x 1" ABS plastic desktop with 1/4" thick wall; 6" square 11 gauge steel mounting plate 5/8" Aluminum post connector
<b>Articulated Swing Arm:</b>	1" square x 13-3/8" solid aluminum; black Anodized
<b>Telescoping Rod:</b>	7/8" x 10" steel with 5/8" turned swing arm rest
<b>Stand:</b>	1" x 10" 11 gauge steel, black; round stock
<b>Base Mount:</b>	Seven (7) gauge two piece design.

## Compatible Accessories



### Palm Holder... Model 1308

Conveniently mounts your Palm Pilot™ to the ACD Desktop with either the pivoting or stationary sidesaddle.



### Gripmatic™... Model 5159

Universal cell phone holder grips all shapes of phones. Quick release. Use with pivoting or stationary sidesaddle.



### Littlelite... Model 1301

12" flexible wand with red filter and rheostat. Three foot power cord plugs into cigarette lighter.



### Screen Holder... Model 1302

Designed to keep your screen in place while you use your computer. Attaches directly to desk.



### Stationary Sidesaddle... Model 5224

Mounts to right edge of ACD Desktop at top, middle or bottom. Use up to two (2) sidesaddles to secure a Palm Pilot™ and/or cell phone. "T" adapter plate works with the Gripmatic and Palm Holder for easy removal of whole unit.



### Pivoting Sidesaddle... Model 5225

Same features and mounting system as stationary saddle; however, you can adjust angle of phone or Palm Pilot™ independent of the desktop angle.